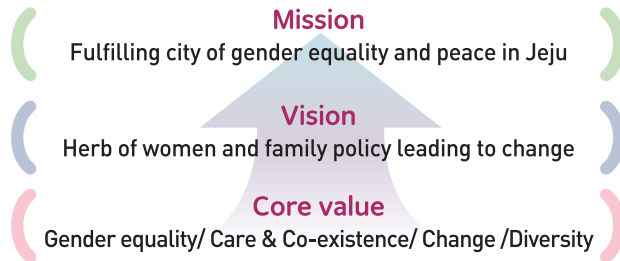
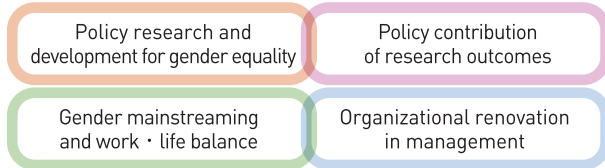


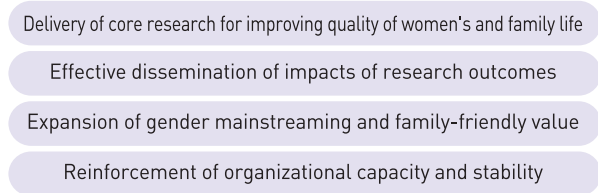
Mission and Vision



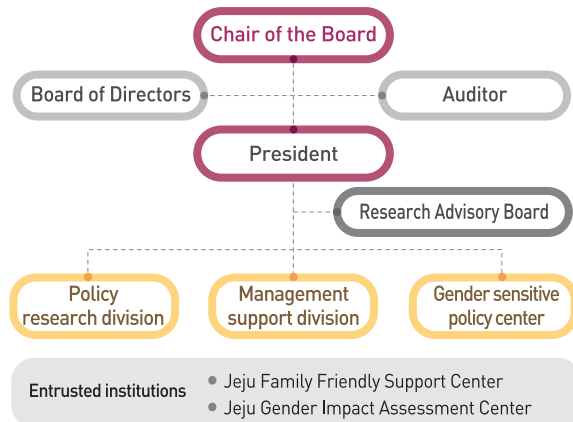
Organizational Objectives



Strategic Goals



Organization: 2 Divisions 1 Center



Herb of Women
and Family Policy
Leading to Change
of Jeju



**JEJU WOMEN & FAMILY
RESEARCH INSTITUTE**

30 Munyeon-ro, Jeju-si, Jeju Special Self-Governing Province,
Republic of Korea, 63121
TEL +82-64-710-3482 FAX+82-64-710-3489
E-mail jewfri@jewfri.kr
Homepage www.jewfri.kr



**Jeju Family Friendly
Support Center**

473 Yeonsam-ro, jeju-si, Jeju Special Self-Governing Province,
Republic of Korea, 63217
TEL +82-64-742-4971~3 FAX +82-64-742-4974
E-mail jfsc-2016@daum.net
Homepage jffsc.kr



Ministry of Gender Equality
and Family

Jeju Gender Impact Assessment Center

30 Munyeon-ro, Jeju-si, Jeju Special Self-Governing Province,
Republic of Korea, 63121
TEL +82-64-710-4977 FAX +82-64-710-4979
E-mail bloommiracle@jewfri.kr
Homepage gia.mogef.go.kr



Herb of Women
and Family Policy
Leading to Change
of Jeju



**JEJU WOMEN & FAMILY
RESEARCH INSTITUTE**

In partnership with people,
we will be the herb of
women and family policy

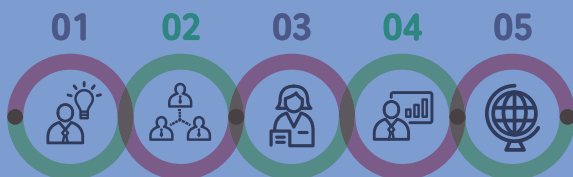
✓ Organizational foundation

- Basic Act for Gender Equality (Article 45: Gender equality policy and related organizations)
- Ordinance for Establishment and Management of Jeju Women and Family Research Institute

✓ Purpose of establishment

- Fulfillment of gender equality in Jeju society through effective development of women and family policy

✓ Major functions



- 01** Research and development of women and family policy
- 02** Program implementation for gender sensitive policy
- 03** Program development and dissemination for enhancement of women's abilities and support for economic activities
- 04** Consulting for gender impact assessment and gender budgeting
- 05** Establishment of domestic and global networks, and exchange and cooperation with other research organizations

Women and family policy research and development

Enhancement of the value of women and family life

- Establishment of mid and long term strategies for reevaluation of Jeju women's life
- Systematic knowledge generation on women's history, culture, livelihood, human rights and education, and domestic and global research exchange

Women's work and socio-economic empowerment

- Social empowerment of Jeju women in women's representativeness, social participation, health, and safety
- Research on the expansion of decent job for career-interrupted women, enhancement of job quality, and strategies for work-life balance support

Dissemination of family culture of care and gender equality

- Expansion of local community of care in consideration of care and work
- Enhancement of the quality of life in diverse families including unmarried single parent, multicultural families
- Development of policy initiatives on marriage and low-fertility from the perspective of gender equality

Enhancement of effective gender equality

- Establishment of mid and long term strategies for establishing gender mainstreaming policy
- Gender impact assessment, gender budgeting analysis and monitoring
- Implementation of research and education for expansion and enrichment of gender equality education for public officers and citizens
- Establishment and service expansion of gender sensitive statistics

Research-Field cooperation and exchange

Establishment of women & family research-field cooperative system

- Operation of policy communication and discussion group, women and family policy forum for strengthening policy-field collaborative system
- Expansion of domestic and global cooperative partnership for women and family policy, and activation of joint projects
- International forum for the fifth year anniversary of the institute

Publicity and service for disseminating research outcome

- Publication for policy communication and performance sharing
- Promotion of citizen accessibility of information and institutional awareness through web service of women and family policy and statistics

Operation of entrusted institutions

Jeju Family Friendly Support Center

- Diagnosis and consulting service for family friendly company, search and expansion of certified family friendly company
- Search and expansion of 'Sunurum(reciprocal cooperation)care community' for expanding the culture of co-raising of children in Jeju region, and support for their activities and publicity

Jeju Gender Impact Assessment Center

- Consulting and education of gender impact assessment and gender budgeting
- Training and support for gender sensitive policy experts in Jeju region
- Establishment and steering of gender sensitive policy network in Jeju region
- Investigation and expansion of gender sensitive policy issues